

■ Packing List

FA-430



HAKKO FA-430

Main unit, Power cord, Cap, Main filter, Pre-filter (qty 10), Instruction manual



Duct set sold separately

C1571 Duct Set (With rectangular nozzle)

Duct (1.2 m), Adapter, Rectangular nozzle, Net, Instruction manual

FA-431



HAKKO FA-431

Main unit, Power cord, Remote control, Cap, Main filter L, Pre-filter L (qty 10), Instruction manual



Duct set sold separately

C1572 Duct Set (with round nozzle)

Duct (1.2 m), Adapter, Round nozzle, Net, Instruction manual

■ Specifications

		FA-430	FA-431
Power consumption		110 W	
Noise level* ¹		50 dB (A) (MEDIUM mode)	
Suction capacity* ²	HIGH	4.7 m ³ /min.	
	MEDIUM	3.7 m ³ /min.	
	LOW	2.8 m ³ /min.	
Filtering efficiency	HIGH	99.96% (0.3 μm) * ³	97% (≥ 0.3 μm)
	MEDIUM	99.97% (0.3 μm) * ³	
	LOW		
Static pressure		1,500 Pa	
Duct Set (sold separately)* ⁴		Φ55 mm x 1.2 m (ESD SAFE)	
Dimensions		330 (W) x 366 (H) x 343 (D) mm	
Weight		7.5 kg	7.2 kg

*1 Measured at a distance of 1 meter from the face of the unit in an anechoic chamber.

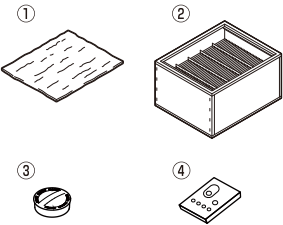
*2 When using two ducts

*3 It is an initial value of collection efficiency based on counting method for airborne dust collected by a single plate of filter (unfolded).

*4 Nets in duct sets are not protected against electrostatic discharge.

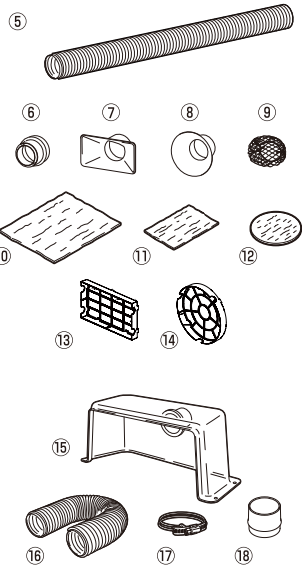
■ Replacement Parts

Part No.	Part name	Specifications
A1572	① Pre-filter (qty 10)	For FA-430
A5034	① Pre-filter L (qty 10)	For FA-431
A1573	② Main filter	For FA-430
A5033	② Main filter L	For FA-431
B3619	③ Cap	A cap is included in a unit as standard.
C5035	④ Remote control	For FA-431



■ Option

Part No.	Part name	Specifications
B3642	⑤ Duct	Φ55 × 1.2 m
B3620	⑥ Adapter	For attaching duct to main unit.
B3622	⑦ Rectangular nozzle	For absorbing smoke from the side.
B3623	⑧ Round nozzle	For absorbing smoke from above.
B3625	⑨ Net (qty 5)	For preventing contaminants from being absorbed. (Mesh dimensions: Approx. 10 mm × 10 mm)
A5035	⑩ Sub-filter (qty 5)	For FA-431 *FA-430 does not perform as its specification with sub-filters.
A5036	⑪ Sub-filter for rectangular nozzle (qty 20)	
A5037	⑫ Sub-filter for round nozzle (qty 20)	
B5146	⑬ Filter case for rectangular nozzle	
B5147	⑭ Filter case for round nozzle	



NOTE The benchtop hood detailed below requires the separate purchase of a Φ75 duct, duct band (B2416) , and 3-inch adapter (B3621) .

Part No.	Part name	Specifications
B2418	⑮ Bench top hood	For stopping smoke from escaping upwards without being affected by air conditioning.
B2410	⑯ Duct	Required when using bench top hood. *Φ75 × 2 m. Not freestanding.
B2416	⑰ Duct band (qty 2)	Required when using bench top hood.
B3621	⑱ Adapter (for 3-inch duct)	Required when using bench top hood and ø75 duct.

CA00486QbYa003 2016.8

HAKKO
HAKKO CORPORATION
OVERSEAS AFFILIATES

U.S.A.
AMERICAN HAKKO PRODUCTS, INC.
28920 AVENUE WILLIAMS VALENCIA, CA 91355, U.S.A.
TEL: (661) 294-0090 FAX: (661) 294-0096
Toll Free (800)88-HAKKO
http://www.hakkousa.com

HEAD OFFICE
4-5, SHIOKUSA 2-CHOME, NANIWA-KU, OSAKA, 556-0024 JAPAN
TEL:+81-6-6561-3225 FAX:+81-6-6561-8466
http://www.hakko.com E-mail:sales@hakko.com

HONG KONG
HAKKO DEVELOPMENT CO., LTD.
ROOM 1504, EASTERN HARBOUR CENTRE,
28 HOI CHAK STREET, QUARRY BAY, HONG KONG.
TEL: 2811-5588 FAX: 2590-0217
http://www.hakko.com.hk
E-mail:info@hakko.com.hk

SINGAPORE
HAKKO PRODUCTS PTE LTD
1, GENTING LINK #02-04
PERFECT ONE, SINGAPORE 349518
TEL: 6748-2277 FAX: 6744-0033
http://www.hakko.com.sg
E-mail:sales@hakko.com.sg

Please access to the following for the other sales affiliates and distributors.
<http://www.hakko.com>

Specifications and design are subject to change without notice. Copyright HAKKO Corporation. All right reserved.



Smoke absorber

Air purifying type

HAKKO FA-430 ESD SAFE
FUME EXTRACTION

HAKKO FA-431 ESD SAFE
FUME EXTRACTION

Air purifying type smoke absorber for your work environments

In addition to FA-430, a quiet and powerful smoke absorber, FA-431, a new smoke absorber with long life filters and a remote control, is now in the lineup.

FA-430

Employing HEPA filter
Filter efficiency

99.97%

NEW
FA-431

Employing excellent cost performance filters
With the use of sub-filter, the life of pre-filter -----
and main filter will be approx.

10 times longer!

Filter efficiency

97%

With a remote control

SYNERGY
ELECTRONICS LTD
sales@synergielectronics.co.nz
www.synergielectronics.co.nz
Ph 0800 347 045

Excellent cost performance by the new long life filters

Suitable for places where a lot of soldering is conducted



The life of pre-filter and main filter will be approx. **4 times*** longer!

Compared to FA-430



Even more!

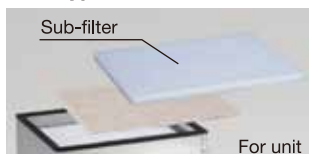
* The filter life will differ depending on the work environments and work conditions.

With the use of sub-filter, the life of pre-filter and main filter will be approx. **10 times*** longer!

Compared to FA-430

The use of sub-filter can make the life of pre-filter and main filter 10 times longer* than those of FA-430 by capturing large particles which can clog the filters very fast.

3 Types of sub-filters



For unit



For rectangular nozzle



For round nozzle

Remote control

With a remote control, now it is very easy to switch ON/OFF the unit which is placed under the table. It is designed to prevent operation mistakes.



Common Features

Quiet operation

Exhaust noise has been reduced without sacrificing suction performance by the addition of a silencer unit to the exhaust outlet to ensure smooth air outflow.

Powerful suction and airflow adjustment

Employing a high-performance motor with 1,500 Pa of static pressure provides powerful suction and quiet operation. 3 airflow modes are available depending on the work environments.

Low	Not easily affected by the surrounding environments. For use in small, quiet locations. (For when low-noise operation is a priority.)
Medium	For normal use.
High	For use in locations that are significantly affected by the surrounding environments. (For when suction performance is a priority.)

Smoke flows in unexpected directions due to a variety of factors; not just because of the influence of air conditioning. High mode is recommended if your worksite is situated near a doorway, in a spot where people continuously pass by, near the exhaust outlet of a large machine, or in a similar location. It is possible to use low mode in laboratories and other places where these kinds of influences are limited.

What do you mean by "surrounding environment"?

Among the best in the industry in terms of low-noise operation

	HAKKO FA-431		Previous model (HAKKO 421)	
	Noise level dB (A)	Air volume m ³ /min.	Noise level dB (A)	Air volume m ³ /min.
HIGH	53	4.7	60*	3.2*
MEDIUM	50	3.7		
LOW	44	2.8		

*Values measured when the unit was used with a 60 Hz power supply.

Lightweight design

Lightweight and compact, HAKKO FA-430 weighs only 7.5 kg. Built-in handles allow the fume extractor to be moved easily, facilitating line changeovers.

* FA-431 weighs 7.2 kg.

Only 7.5kg



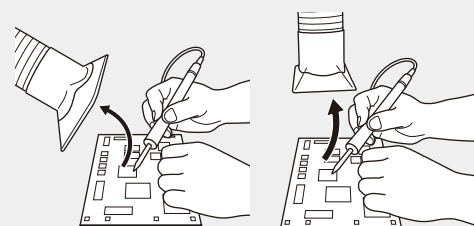
Freestanding ducts

Ducts can be bent or lengthened as desired and maintain their shape after adjustment, letting you place them exactly where suction is needed. Say goodbye forever to the hassle of long, heavy, and hard-to-handle ducts.



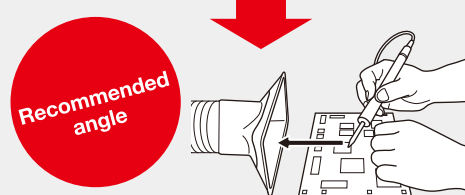
Bends and stretches freely for perfect placement!

Movement of smoke is affected by the surrounding environments



If the duct is mounted at an angle above the workpiece, it is affected by air conditioning

If the duct is mounted directly above, it can be difficult to see the workpiece



Duct is mounted on the worktable to provide excellent suction performance

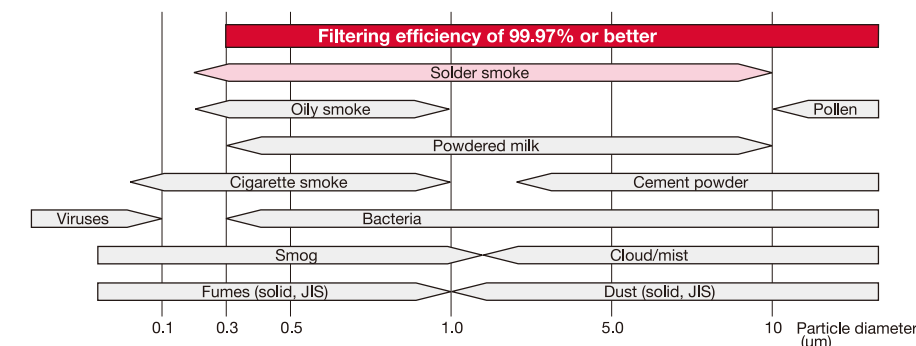
Employing HEPA* filter Excellent filtering efficiency 99.97% of particles greater than 0.3 μm

Suitable for soldering in laboratory or office environments



FA-430 provides the excellent filtering efficiency, 99.97% of particles greater than 0.3 μm, by HEPA filter.

Aerosol particle diameter range



Filter replacement notification function ensures excellent filtering efficiency can be maintained at all times

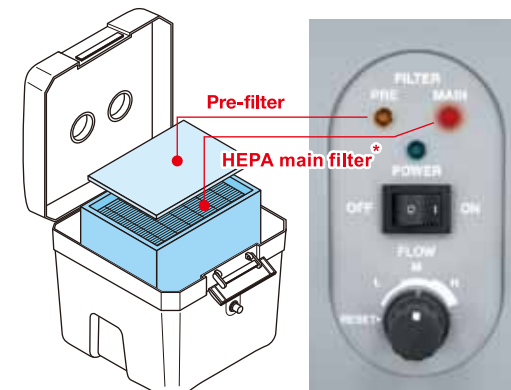
No matter how sophisticated a fume extractor is, if the filter is not replaced at the right time, it will not be able to give maximum performance. HAKKO FA-430 detects the number of fan rotations and notifies the operator of the appropriate time to replace the filter, guaranteeing a comfortable working environment.

Pre-filter

When the pre-filter is 80% clogged or has been used for 200 hours, the orange indicator flashes on and off.

HEPA main filter*

When the 10th pre-filter needs replacing, the orange and red lamps flash on and off.



*The initial value of collection efficiency based on counting method for airborne dust collected by a single plate of filter (unfolded).